

FURNITURECONCEPTS®

✓Getting Started on Your Furniture Project:



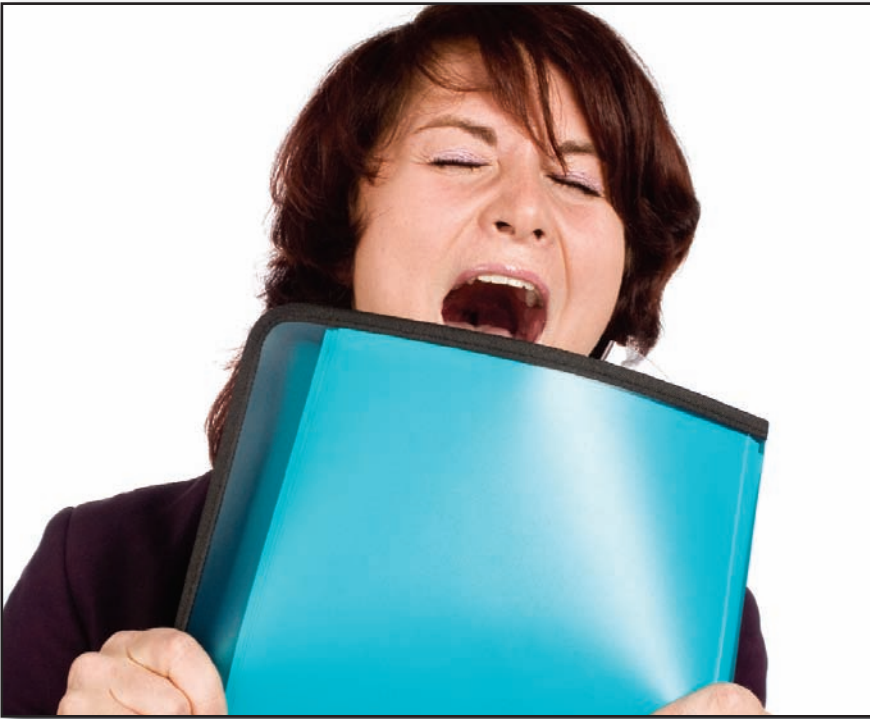
Find a Contract Furniture Provider...Check out Furniture Concepts



FURNITURECONCEPTS
Home of TOUGH STUFF!

800.969.4100 www.furnitureconcepts.com info@furnitureconcepts.com

Getting Started on Your Furniture Project.



You Want *ME* to Buy the Furniture?

As a leader in the contract furniture industry, we hear from lots of people who are handed the responsibility of buying the furniture for

their facility despite having no real experience with furniture buying.

We often ask these buyers if they feel like they drew the “short straw” and we overwhelmingly find that is the expression they relate to the most.



Find a Contract Furniture Provider...

We Want it to Look Like Home...

The phrase “institutional furniture” is still used as a broad reference to furniture for group living and health care environments.



This phrase suggests high durability and virtual indestructibility, but the phrase “institutional furniture” also calls up images of unattractive, sterile and uncomfortable seating, bedroom and dining pieces.

In Today's Group Living and Health Care Environments, Institutional Furniture Has Come to Mean:

- Furniture that looks like what you would find in a HOME but is **DURABLE** *beyond retail furniture Standards.*



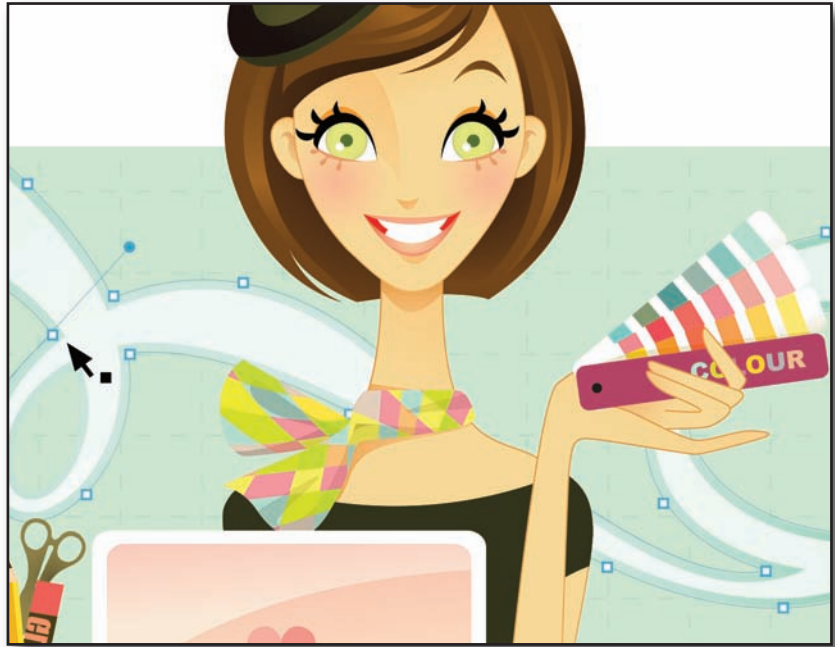
What look do we want for our facility?

Consider WHO, WHAT, WHERE & WHEN

Making intelligent choices requires information about furnishings choices -lots of it.

You will be serving in different roles as the process unfolds:

- Research Assistant
- Interior Decorator
- Purchasing Agent
- and Expediter



As you move through the process of furnishing, *remember these questions:*



What look do we want for our facility?

Consider **WHO**, **WHAT**, **WHERE** & **WHEN**



WHO:

Think of the individuals who will occupy the spaces & identify any specific needs as early in the process as possible.

Sometimes this is not possible because the individuals who will live there haven't yet been selected.

When this is the case, focus on the activities that will take place in each space, but keep your plans flexible.



*Our clients are:_____ There special furnishing
needs _____.*

Consider WHO, WHAT, WHERE & WHEN

WHAT:

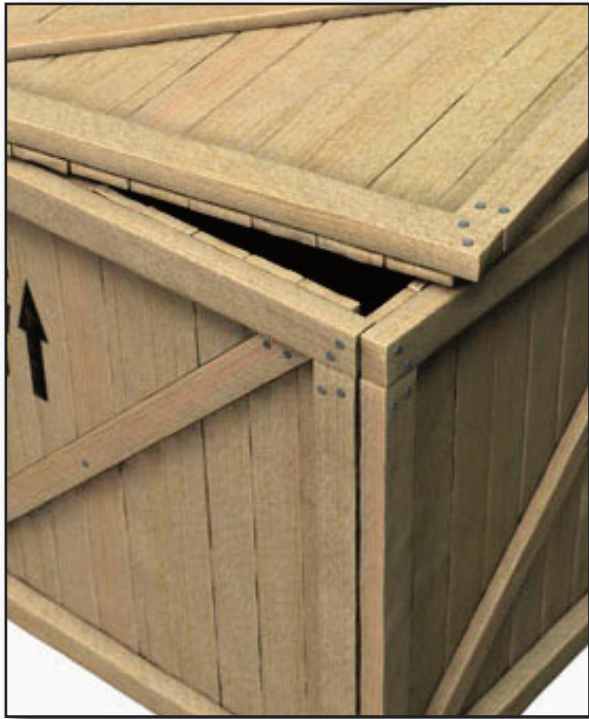
Don't be concerned yet with style or color, but list the items that you believe will support the broadest spectrum of activities in each room.

Your main goal is to create rooms that support the needs and activities of the people living in the home.



What rooms and environments do we need?

Consider WHO, WHAT, WHERE & WHEN



WHERE & WHEN?

Begin the process as early as possible, keeping in mind that *delivery on special order merchandise will range from a few weeks to months.*

Furniture designed and constructed for special needs will require more forethought than driving to the nearest local retail store.



Start planning early!

Consider WHO, WHAT, **WHERE** & WHEN

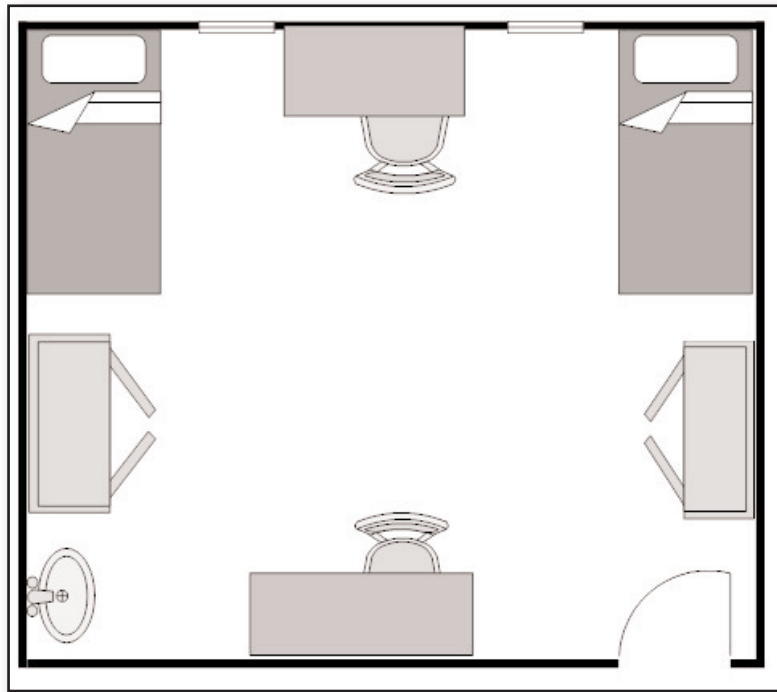
WHERE?

Many factors influence the placement of furniture:

- Location and height of windows,
- Location of electrical outlets, as well as traffic patterns and ADA requirements.

Designing the space requires a technical study, which sounds more difficult than it is. If the home is new construction, the architect will typically supply this.

Professional furniture vendors can create a floor plan at no additional cost, or you can purchase ready-made design kits or software.

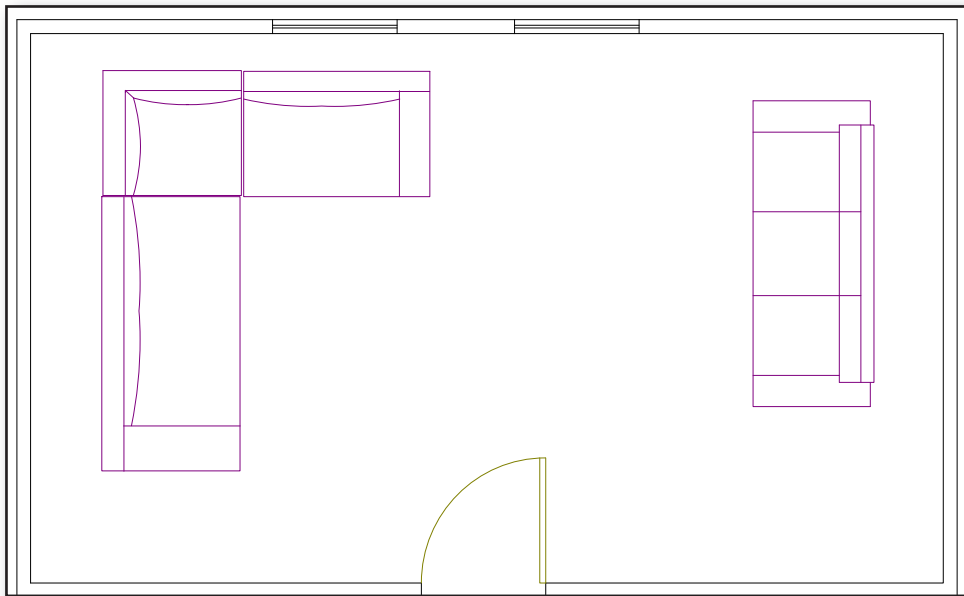


Where will the furniture be placed? Any obstacles?

WHY...

WHY?

It may seem like a lot of work, but drawing up a floor plan will save from many potential mistakes in the long run.



It is much easier to move a sofa drawn in 1/4" scale on a piece of paper than it is to direct moving crew to reposition the sofa several times once it is delivered.



Check out a floor plan for positioning of furniture.

HOW...

HOW?

Perhaps the most important concern when choosing furniture is how people will use it.

The best constructed and most expensive pieces will be useless props if they are not appropriate to residents' needs.

Conversation is most comfortable when the participants are between 5 and 7 feet away from each other.

Arrange furniture accordingly in smaller groupings to encourage interactions.



What needs do our residence have? How will they using it?

SPECIAL CONSIDERATIONS FOR Behavioral Issues, Limited Mobility, Incontinence, Bariatric & More.

When it comes to group living environments for health care, there is no such thing as a “typical” group.



Each facility is tasked with a meeting the specific needs of their patients and consumers.

An ideal set-up for one facilities' population might create too many risks or obstacles for another's.

What unites all group care facilities is the need for nurturing client's independence while offering safety and comfort for clients, staff and visitors.

Here are some special topics to consider:



What furniture will fit my residences needs but also create a warm environment?

SPECIAL CONSIDERATIONS FOR Behavioral Issues, Limited Mobility, Incontinence, Bariatric & More.

BEHAVIORAL ISSUES?

For managers and providers of therapeutic health care environments for patients with mental health issues, delivering the right care might include offering the right accommodations.



Often, children and adults who are at risk for behavioral outbursts or self-harm can benefit from something as simple as rooms furnished with anti-contraband storage chests, cabinets and beds.

One solution is anti-contraband furniture that is specially designed to prevent hiding sharp objects or other dangerous, forbidden items.

- Anti-contraband design essentially replaces drawers and doors with finished, open spaces.
- This open design allows staff to easily inspect for any risky contraband items.
- Anti-contraband furnishings can include traditional dresser, cabinet and bed designs.
- Anti-Contraband bedroom furniture replaces traditional drawers with tight-fitting shelves that are doweled, glued, and angle-bored to ensure a strong, secure fit. Staff benefits from enhanced visibility and efficient inspections, while Administration benefits from reduced initial costs and minimal up keep costs.
- For the highest-risk patients and clients, tall cabinets can even be made with a slanted top to both prevent contraband and reduce risk of self-harm through hanging.
- Anti-Contraband is furniture for the most demanding environments, and at the same time a solution that is both aesthetically pleasing and functional.



What furniture would be appropriate for the behavioral issues we have?

SPECIAL CONSIDERATIONS FOR **Behavioral Issues, Limited Mobility, Incontinence, Bariatric & More.**

In Behavioral Healthcare...

...environments, elements from building design and hardware, to furniture and fixtures impact traffic flow, comfort, and the overall functionality of the space.

A recent feature in *Behavioral Healthcare* recognized outstanding design in treatment and recovery centers.

What united these award-winning spaces is that they offer patients and staff spacious facilities that simultaneously offer both privacy and community.

Best practices for top behavioral healthcare facilities include planning functional spaces that flow from one to the next but are separated by floor treatments and furniture to make them feel cozy and intimate - even when the overall space is big. Spaces for dining, group therapy, family visits and game areas are barrier-free but still clearly a separate space.



Create community spaces, but also remember privacy.

SPECIAL CONSIDERATIONS FOR Behavioral Issues, Limited Mobility, Incontinence, Bariatric & More.

LIMITED MOBILITY & INCONTINENCE:



Due to the growing size of the aging population, the *contract furniture* industry has recently given **incontinence and limited mobility** a great deal of attention.

Engineers and designers have interviewed hundreds of care providers and administrators to help create furnishing solutions for **limited mobility and incontinence care.**

The results of this intensive research include improved design in furniture such as:

Removable seats designed to guide urine to the ground and away from people and furnishings.

Specialized fabrics that easily sanitize, fluid-proof upholstery.

Fully water-resistant frames that prevent fluid saturation and warping.

Sophisticated styling that scales down cushy fill and deep seats.



Staff AND residents would love this! Easy to clean and nice looking.

SPECIAL CONSIDERATIONS FOR Behavioral Issues, Limited Mobility, Incontinence, Bariatric & More.



BARIATRIC

People of every shape and size want to be comfortable and want to be able to sit in public spaces with dignity.

Fortunately, there are more and more **bariatric options** available from *contract furniture* providers.

Bariatric furniture includes a wide variety of wood, metal and upholstered seating pieces that are designed and tested to hold up to heavier weights than standard furniture pieces.



Bariatric sounds like a good option to add.

SPECIAL CONSIDERATIONS FOR Behavioral Issues, Limited Mobility, Incontinence, Bariatric & More.

Adding **bariatric furniture** to a seating space is not only a necessary option to prevent furniture breakage, but all people deserve the opportunity to use seating with an appropriate width that allows a body to fit comfortably.



Truth is that although bariatric seating serves a very practical purpose, constructing furniture to higher weight standards also

serves to ensure a highly durable and versatile seating piece that can and will be used by everyone (patients, clients, guests and staff!) regardless of size.

So what exactly does bariatric furniture mean?:

Although there may be some variations, in general a **bariatric seating** piece has a seat width of at least 30 inches and sometimes even up to a spacious 40 inches. In contrast, a standard lobby or common area chair is usually about 20 inches.

Additionally, a **bariatric chair** is weight-tested by professional trade and industry organizations such as ANSI / BIFMA whose certifications are recognized nationally. Bariatric chair weight standard certifications range from 750lb to 1000 lb.



Look into mixing bariatric furniture in with our other seating.

WHAT EXACTLY IS CONTRACT FURNITURE?

For individuals with mental, behavioral, recovery, mobility or any other special needs and their caretakers, independence is a critical goal.

For facility administrators, it is important to create functional work and living spaces that foster independence without making an individual feel singled out.

Special needs furniture has become a dynamic furniture category that has really dedicated itself to manufacturing common sense furniture solutions for use by people of all abilities.



Contract furniture providers have spent time and money working to design best in class, highly durable furniture that is made to standards only found in the contract furniture industry.

Acute and non-acute Health care services are one of the largest segments of the US economy. As such, it only makes sense that specialized furniture providers give the Health care industry the time and attention required to make products that speak directly to the needs of administrators, direct services providers, consumers and the consumer's family.



Read more about why contract furniture is a smart choice.

CONTRACT FURNITURE...

Commercial (contract) grade furniture guarantees that furniture is manufactured to the highest industry standards.

The end goal is high durability and longevity of the pieces.

When buying commercial lounge furniture, look for a provider that understands the uses and desired look of your facility to ensure the right recommendations.



Most any look can be value-engineered - a fancy word for making an item less expensive through use of less expensive components - to fit your budget.

Don't be afraid to expect a best-in-class look even if your funds are limited.



Need to buy from a to contract furniture Provider.

CONCLUSION:

The most favored furniture designs for group living and health care environments are those that are residential in style and mimic what a client might find in their homes.

Versatile pieces like upholstered chairs and laminate top tables can be used for a variety of therapies and activities.

Durable fabrics and vinyls ensure that furniture will last over time.

Furniture Concepts, a respected leader in providing furniture for the healthcare industry can be counted on to provide the type of furniture that will **help you to create a best in class environment that is stylish, functional, durable and affordable.**

With the right advice, even the most overwhelming furniture project can be organized to create the perfect therapeutic environment. And, at the right price!



Note: Go to www.furnitureconcepts.com