

WC777-044 Cyan



WC777-012 Jonquil



WC777-039 Mango



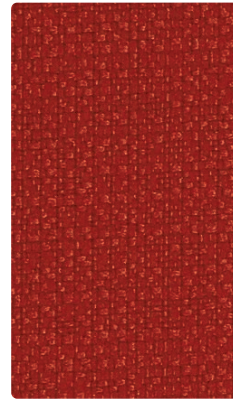
WC777-027 Parchment



WC777-024 Marine



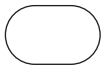
WC777-063 Pear



WC777-009 Paprika



WC777-000 Mocha



Application
Seating

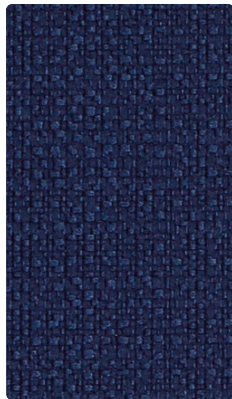
Content
100% Polyester

Width
54 inches

Abrasion
Exceeds 250,000 Double Rubs

Finish
Crypton with Antimicrobial
Silver Ion Technology

Reduced Environmental Impact
GREENGUARD Gold Certified



WC777-004 Royal



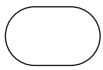
WC777-053 Forest



WC777-001 Crimson



WC777-026 Charcoal



WC777-034 Indigo



WC777-016 Sandstone



WC777-005 Eggplant



WC777-006 Ebony

TECHNICAL INFORMATION

Content: 100% Polyester
 Width: 54"
 Weight: 16 oz./linear yard

Backing: Crypton®
 Finish: Crypton® with Antimicrobial Silver Ion Technology
 Cleaning Code: C

Approx. Repeat: None
 Directional: Yes
 Railroaded: No

PERFORMANCE (*Certifications Marks Owned by ACT.)

Test Method	Results
Surface Abrasion: Heavy Duty *	ASTM-D 3597 (Cotton Duck) Exceeds 250,000 Double Rubs
Breaking Strength: *	ASTM-D-5034 Warp 350 lbs / Fill 350 lbs
Seam Slippage: *	ASTM-D-4034 Warp 76 lbs / Fill 71 lbs
Pilling Resistance: *	ASTM-D-3511 Class 4
Colorfastness to Crocking: *	AATCC-8 Dry: Class 4 / Wet: Class 3
Colorfastness to Light: *	AATCC-16E Class 4 at 60 hours

Class in the colorfastness requirements is based on a numerical scale of 5 for negligible or no color transfer to 1 for very severe color change or color transfer.

FLAMMABILITY

California Technical Bulletin 117-2013 Passes
 NFPA 260 (Equivalent to UFAC) Class 1 Passes
 May comply with California Technical Bulletin 133 when combined with appropriate components.

REDUCED ENVIRONMENTAL IMPACT

GREENGUARD Gold Certified products are tested for low chemical emissions to standard UL 2818. For more information, visit UL.com/gg.
All Crypton products are environmentally preferable. Crypton is produced in a world-class manufacturing operation. Crypton is committed to green and has incorporated Crypton's optimized green formulation in all Crypton upholstery, meaning a greener Crypton.

STAIN RESISTANCE

Stain Resistance is based on a numerical scale with 5 being the highest for stain removal.

	After 5 min./After 24 hrs.		After 5 min./After 24 hrs.
Blood	Class 4-5/Class 4-5	Urine	Class 4-5/Class 4-5
Iodine	Class 4-5/Class 4-5	Suntan Lotion	Class 4-5/Class 4-5
Ketchup	Class 4-5/Class 4-5	Black Coffee	Class 4-5/Class 4-5
Milk	Class 4-5/Class 4-5	Cola	Class 4-5/Class 4-5

BACTERIAL AND FUNGUS/MILDEW RESISTANCE

Non leaching Silver Ion Technology microbial protection.
 Excellent anti-bacterial and anti-fungal properties as evidenced by the following methods: 4 and 5 millimeter-wide growth-free zones produced against the staphylococcus aureus test organism.
 Crypton resists fungal growth, test AATCC 30-2004, Aspergillus niger (ATCC #6275).
 Crypton resists bacterial growth, test ISO 20743:2007(E), Klebsiella pneumoniae (ATCC #4352)
 EPA Approved – When Crypton's Disinfectant and Deodorizer is used on Crypton Super Fabric, you have a disinfected fabric system. Crypton is the first and only fabric approved by the EPA proven to be disinfected. Crypton's Disinfectant and Deodorizer will kill MRSA, VRSA, IV, E. Coli, hepatitis and many more bacteria and viruses.

CARE AND CLEANING INFORMATION

C: Crypton® Cleaning – Crypton fabrics are available in various fiber types, and all Crypton fabrics can be cleaned with soap and water.
 For the best cleaning solution, use CRYPTON UPHOLSTERY CLEANER, available from Mayer Fabrics.

ADDITIONAL INFORMATION

Custom Capabilities: All patterns can be custom colored. Minimum yardage applies.
Memo Samples: Please keep this card intact. Individual memo samples can be ordered on our website or by contacting customer service.
Fabric Color Matching: Mayer Fabrics always attempts to ship a satisfactory commercial match. Because of industry standard dye lot variation, colors may not match exactly.
Digital Swatch Card Color Matching: Due to color variations on different monitors and color printers, actual swatch colors may vary slightly. Please request a memo sample from Mayer Fabrics to ensure proper color representation.
Specifications: Specifications are correct at the time of printing. Current specifications are available on our website.

