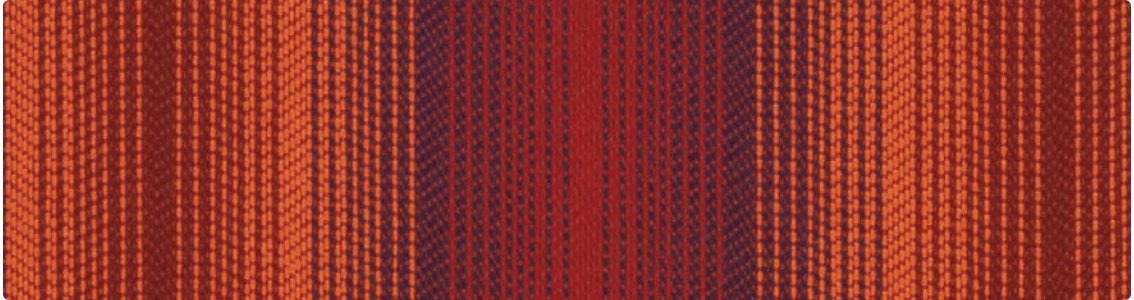


# Woven Crypton®

with Antimicrobial Silver Ion Technology

# JOURNEY

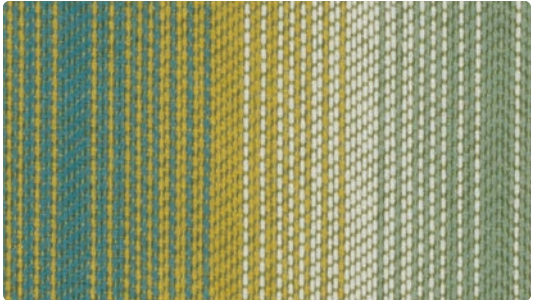
SHOWN RAILROADED



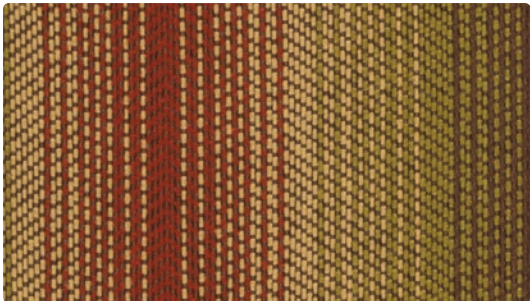
WC952-009 Flame



WC952-002 Sunshine



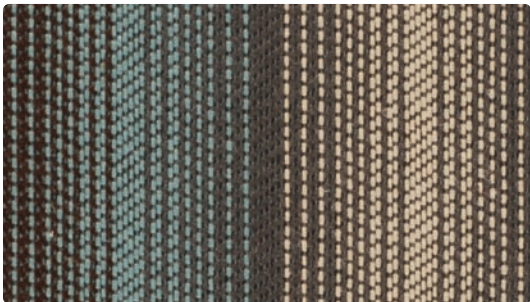
WC952-003 Springtime



WC952-023 Vintage



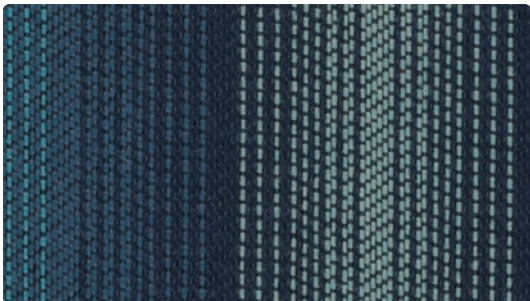
WC952-000 Latte



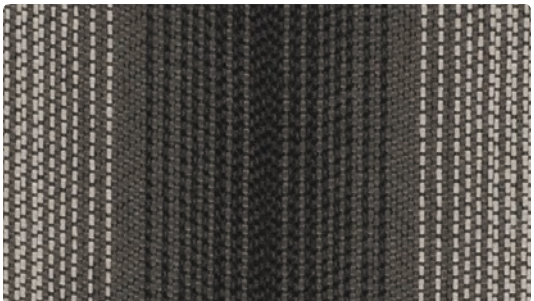
WC952-014 Zenith



WC952-001 Carnival



WC952-004 Danube



WC952-006 Shadow



**Application**  
Seating

**Content**  
100% Polyester

**Width**  
54 inches

**Abrasion**  
Exceeds 100,000 Double Rubs

**Finish**  
Crypton® with Antimicrobial Silver Ion Technology

**Reduced Environmental Impact**  
GREENGUARD Gold Certified



### TECHNICAL INFORMATION

Content: 100% Polyester  
Width: 54"  
Weight: 14.41 oz./linear yard

Backing: Crypton®  
Finish: Crypton® with Antimicrobial  
Silver Ion Technology  
Cleaning Code: C, BC

Approx. Repeat: 4.5" H, 0" V  
Directional: Yes  
Shown Railroaded: Yes

### PERFORMANCE

Test Method	Results
Surface Abrasion: Heavy Duty	ASTM-D-3597/4157 (Cotton Duck) Exceeds 100,000 Double Rubs
Breaking Strength:	ASTM-D-5034 (Grab Test)(Grab Test) Warp 100 lbs/Fill 100 lbs
Seam Slippage:	ASTM-D-4034 Warp 75.5 lbs/Fill 78 lbs
Pilling Resistance:	ASTM-D-3511 Class 4
Colorfastness to Crocking:	AATCC-8 Dry: Class 4/Wet: Class 3.5
Colorfastness to Light:	AATCC-16 Class 4 at 40 hours

Class in the colorfastness requirements is based on a numerical scale of 5 for negligible or no color transfer to 1 for very severe color change or color transfer.

### FLAMMABILITY

California Technical Bulletin 117-2013  
NFPA 260/UFAC Class 1  
May comply with California Technical Bulletin 133 when combined with appropriate components.

### REDUCED ENVIRONMENTAL IMPACT

All Crypton products are environmentally preferable. Crypton is produced in a world-class manufacturing operation. Crypton is committed to green and has incorporated Crypton's optimized green formulation in all Crypton upholstery, meaning a greener Crypton.

This product is GREENGUARD Gold Certified for low chemical and particle emissions to UL standard UL 2818 and may contribute to LEED certification. For complete information visit [mayerfabrics.com](http://mayerfabrics.com) and [UL.com/gg](http://UL.com/gg).

### STAIN RESISTANCE

Stain Resistance is based on a numerical scale with 5 being the highest for stain removal.

	After 5 min./After 24 hrs.		After 5 min./After 24 hrs.
Blood	Class 4-5/Class 4-5	Urine	Class 4-5/Class 4-5
Iodine	Class 4-5/Class 4-5	Suntan Lotion	Class 4-5/Class 4-5
Ketchup	Class 4-5/Class 4-5	Black Coffee	Class 4-5/Class 4-5
Milk	Class 4-5/Class 4-5	Cola	Class 4-5/Class 4-5

### BACTERIAL AND FUNGUS/MILDEW RESISTANCE

Non leaching Silver Ion Technology microbial protection.  
Excellent anti-bacterial and anti-fungal properties as evidenced by the following methods: 4 and 5 millimeter-wide growth-free zones produced against the staphylococcus aureus test organism.  
Crypton resists fungal growth, test AATCC 30-2004, Aspergillus niger (ATCC #6275).  
Crypton resists bacterial growth, test ISO 20743:2007(E), Klebsiella pneumoniae (ATCC #4352)  
EPA Approved – When Crypton's Disinfectant and Deodorizer is used on Crypton Super Fabric, you have a disinfected fabric system. Crypton is the first and only fabric approved by the EPA proven to be disinfected. Crypton's Disinfectant and Deodorizer will kill MRSA, VRSA, IV, E. Coli, hepatitis and many more bacteria and viruses.

### CARE AND CLEANING INFORMATION

C: Crypton® Cleaning – Crypton fabrics are available in various fiber types, and all Crypton fabrics can be cleaned with soap and water. For the best cleaning solution, use CRYPTON UPHOLSTERY CLEANER, available from Mayer Fabrics.

BC: Bleach Cleanable – 1 part bleach, 9 parts water = 10% bleach, 90% water solution. Do not clean/disinfect fabric for longer than 10 minutes using the 10% bleach solution. Always rinse promptly with clean water after applying the bleach solution. Failure to do so will void any and all warranties.

### ADDITIONAL INFORMATION

**Custom Capabilities:** All patterns can be custom colored. Minimum yardage applies.

**Memo Samples:** Please keep this card intact. Individual memo samples can be ordered on our website or by contacting customer service.

**Fabric Color Matching:** Mayer Fabrics always attempts to ship a satisfactory commercial match. Because of industry standard dye lot variation, colors may not match exactly.

**Digital Swatch Card Color Matching:** Due to color variations on different monitors and color printers, actual swatch colors may vary slightly. Please request a memo sample from Mayer Fabrics to ensure proper color representation.

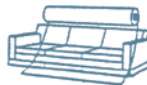
**Specifications:** Specifications are correct at the time of printing. Current specifications are available on our website.



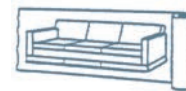
This fabric meets or exceeds these ACT performance guidelines.  
\*Certification Marks owned by ACT\*



Railroaded: This feature allows reduction of seams and enables smoother furniture tailoring.



Fabric "up the roll" or "regular" position



Fabric "railroaded" or "top selvage" position

We recommend all railroaded patterns should be upholstered as shown on card.



**MAYERFABRICS**

GSA Contract # GS-28F-0022P



60611