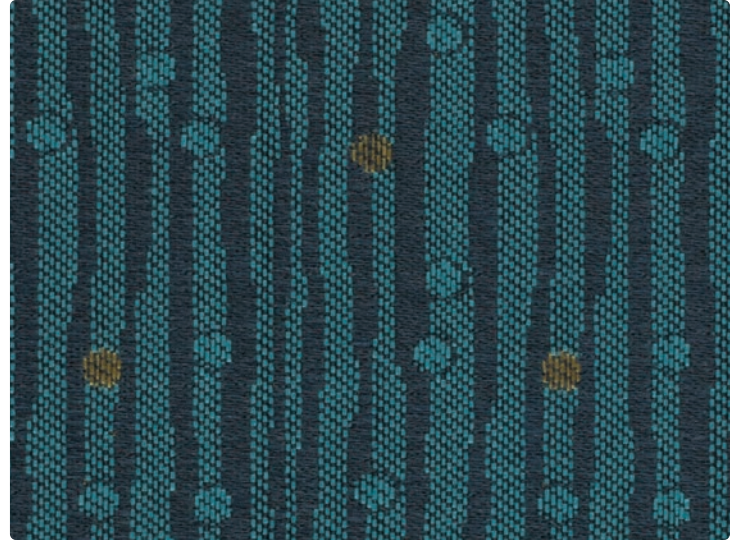


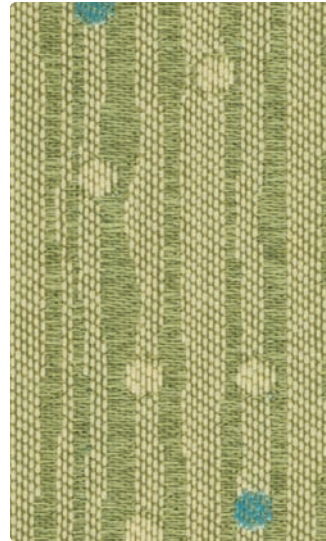
WC956-009 Flame



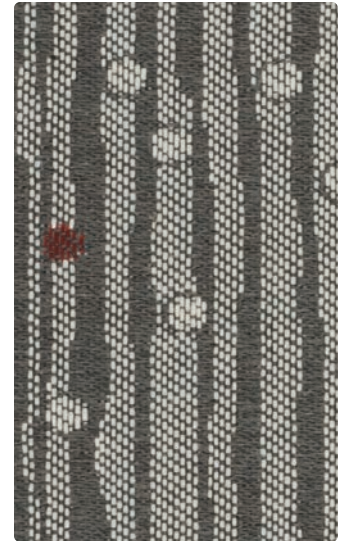
WC956-004 Lake



WC956-008 Magenta



WC956-003 Aloe



WC956-006 Sterling

Application
Seating

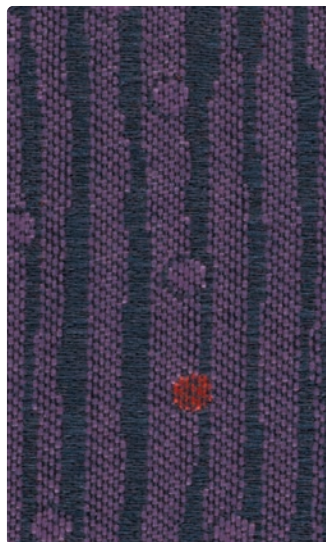
Content
100% Polyester

Width
54 inches

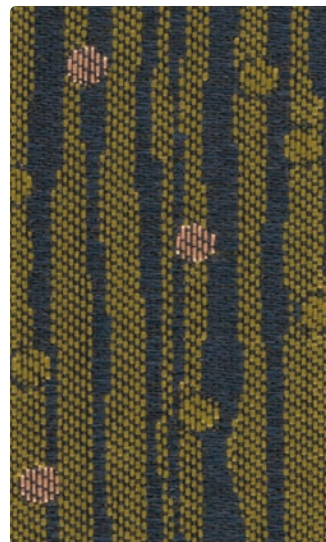
Abrasion
Passes 70,000 Double Rubs

Finish
Crypton® with Antimicrobial Silver Ion Technology

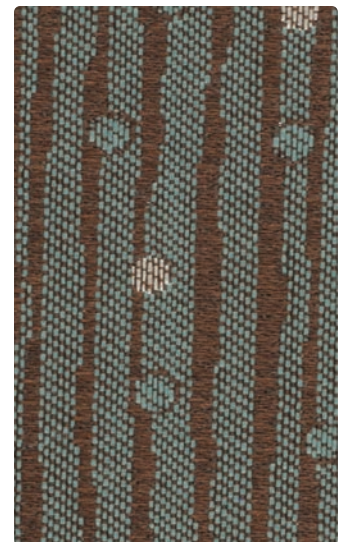
Reduced Environmental Impact
GREENGUARD Gold Certified



WC956-005 Aubergine



WC956-013 Black Olive



WC956-014 Zenith

TECHNICAL INFORMATION

Content: 100% Polyester Width: 54" Weight: 15.21 oz./linear yard	Backing: Crypton® Finish: Crypton® with Antimicrobial Silver Ion Technology Cleaning Code: C, BC	Approx. Repeat: 2.375" H, 4.75" V Directional: Yes Shown Railroaded: Yes
--	--	--

PERFORMANCE

Test Method	Results
Surface Abrasion: Heavy Duty	ASTM-D-3597/4157 (Cotton Duck) Passes 70,000 Double Rubs
Breaking Strength:	ASTM-D-5034 (Grab Test)(Grab Test) Warp 477.2 lbs/Fill 389.7 lbs
Seam Slippage:	ASTM-D-4034 Warp 54.7 lbs/Fill 44.3 lbs
Pilling Resistance:	ASTM-D-3511 Class 4
Colorfastness to Crocking:	AATCC-8 Dry: Class 4/Wet: Class 3
Colorfastness to Light:	AATCC-16 Class 4 at 40 hours

Class in the colorfastness requirements is based on a numerical scale of 5 for negligible or no color transfer to 1 for very severe color change or color transfer.

FLAMMABILITY

California Technical Bulletin 117-2013
NFPA 260/UFAC Class 1
May comply with California Technical Bulletin 133 when combined with appropriate components.

REDUCED ENVIRONMENTAL IMPACT

All Crypton products are environmentally preferable. Crypton is produced in a world-class manufacturing operation. Crypton is committed to green and has incorporated Crypton's optimized green formulation in all Crypton upholstery, meaning a greener Crypton.

This product is GREENGUARD Gold Certified for low chemical and particle emissions to UL standard UL 2818 and may contribute to LEED certification. For complete information visit mayerfabrics.com and UL.com/gg.

STAIN RESISTANCE

Stain Resistance is based on a numerical scale with 5 being the highest for stain removal.

	After 5 min./After 24 hrs.		After 5 min./After 24 hrs.
Blood	Class 4-5/Class 4-5	Urine	Class 4-5/Class 4-5
Iodine	Class 4-5/Class 4-5	Suntan Lotion	Class 4-5/Class 4-5
Ketchup	Class 4-5/Class 4-5	Black Coffee	Class 4-5/Class 4-5
Milk	Class 4-5/Class 4-5	Cola	Class 4-5/Class 4-5

BACTERIAL AND FUNGUS/MILDEW RESISTANCE

Non leaching Silver Ion Technology microbial protection.
Excellent anti-bacterial and anti-fungal properties as evidenced by the following methods: 4 and 5 millimeter-wide growth-free zones produced against the staphylococcus aureus test organism.
Crypton resists fungal growth, test AATCC 30-2004, Aspergillus niger (ATCC #6275).
Crypton resists bacterial growth, test ISO 20743:2007(E), Klebsiella pneumoniae (ATCC #4352)
EPA Approved – When Crypton's Disinfectant and Deodorizer is used on Crypton Super Fabric, you have a disinfected fabric system. Crypton is the first and only fabric approved by the EPA proven to be disinfected. Crypton's Disinfectant and Deodorizer will kill MRSA, VRSA, IV, E. Coli, hepatitis and many more bacteria and viruses.

CARE AND CLEANING INFORMATION

C: Crypton® Cleaning – Crypton fabrics are available in various fiber types, and all Crypton fabrics can be cleaned with soap and water. For the best cleaning solution, use CRYPTON UPHOLSTERY CLEANER, available from Mayer Fabrics.

BC: Bleach Cleanable – 1 part bleach, 9 parts water = 10% bleach, 90% water solution. Do not clean/disinfect fabric for longer than 10 minutes using the 10% bleach solution. Always rinse promptly with clean water after applying the bleach solution. Failure to do so will void any and all warranties.

ADDITIONAL INFORMATION

Custom Capabilities: All patterns can be custom colored. Minimum yardage applies.

Memo Samples: Please keep this card intact. Individual memo samples can be ordered on our website or by contacting customer service.

Fabric Color Matching: Mayer Fabrics always attempts to ship a satisfactory commercial match. Because of industry standard dye lot variation, colors may not match exactly.

Digital Swatch Card Color Matching: Due to color variations on different monitors and color printers, actual swatch colors may vary slightly. Please request a memo sample from Mayer Fabrics to ensure proper color representation.

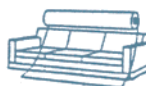
Specifications: Specifications are correct at the time of printing. Current specifications are available on our website.



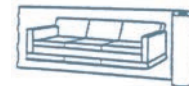
This fabric meets or exceeds these ACT performance guidelines.
Certification Marks owned by ACT



Railroaded: This feature allows reduction of seams and enables smoother furniture tailoring.



Fabric "up the roll" or "regular" position



Fabric "railroaded" or "top selvage" position

We recommend all railroaded patterns should be upholstered as shown on card.

