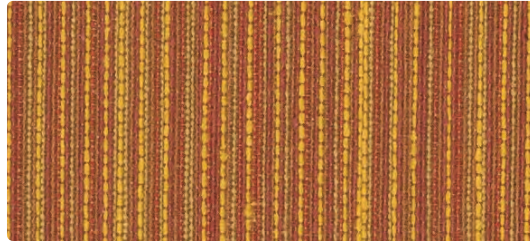
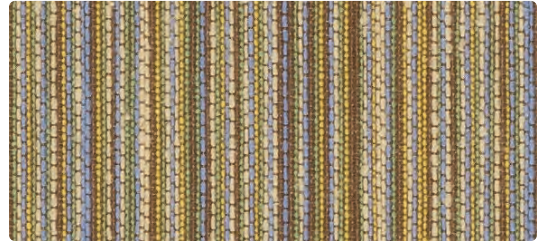


360-007 **Beachcomber** (Nano-Tex® only)  
DB405-007 (Nano-Tex® plus DuraBlock™)



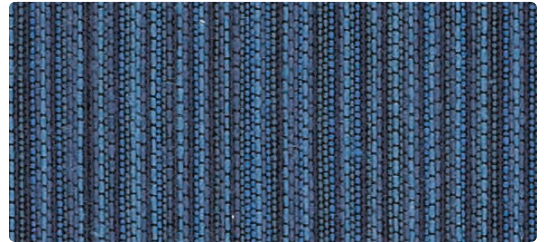
360-009 **Pumpkin** (Nano-Tex® only)  
DB405-009 (Nano-Tex® plus DuraBlock™)



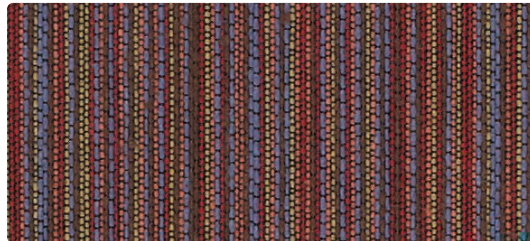
360-024 **Azure** (Nano-Tex® only)  
DB405-024 (Nano-Tex® plus DuraBlock™)



360-001 **Fiesta** (Nano-Tex® only)  
DB405-001 (Nano-Tex® plus DuraBlock™)



360-004 **Sapphire** (Nano-Tex® only)  
DB405-004 (Nano-Tex® plus DuraBlock™)



360-005 **Wildberry** (Nano-Tex® only)  
DB405-005 (Nano-Tex® plus DuraBlock™)



360-014 **Capri** (Nano-Tex® only)  
DB405-014 (Nano-Tex® plus DuraBlock™)



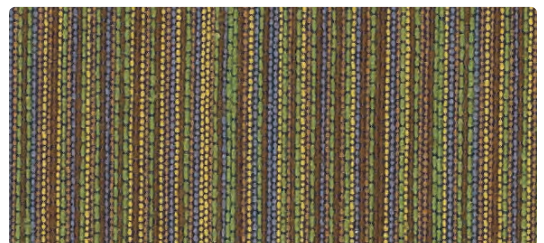
360-019 **Bronze** (Nano-Tex® only)  
DB405-019 (Nano-Tex® plus DuraBlock™)



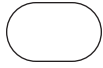
360-013 **Celadon** (Nano-Tex® only)  
DB405-013 (Nano-Tex® plus DuraBlock™)



360-006 **Granite** (Nano-Tex® only)  
DB405-006 (Nano-Tex® plus DuraBlock™)



360-003 **Meadow** (Nano-Tex® only)  
DB405-003 (Nano-Tex® plus DuraBlock™)



**Use**  
Seating

**Content**  
54% Cotton, 46% Polyester

**Width**  
54 inches

**Abrasion**  
Exceeds 50,000 Double Rubs

**Finish**  
Nano-Tex®

**Shown Railroaded**

DB = plus DuraBlock™ barrier



## TECHNICAL INFORMATION

Content: 54% Cotton, 46% Polyester  
 Width: 54"  
 Weight: 13.34 oz./linear yard

Backing: Latex (also available with DuraBlock™)  
 Finish: Nano-Tex®  
 Cleaning Code: S

Approx. Repeat: 2.25" H, 0" V  
 Directional: Yes  
 Shown Railroaded: Yes

## PERFORMANCE

| Test Method                             | Results   |
|---|---|
| Surface Abrasion: Heavy Duty <b>A</b> * | ASTM-D-3597 (Cotton Duck)<br>Exceeds 50,000 Double Rubs |
| Breaking Strength: ✂*                   | ASTM-D-5034<br>Warp 100 lbs/Fill 73 lbs                 |
| Seam Slippage: ✂*                       | ASTM-D-4034<br>Warp 53 lbs/Fill 43 lbs                  |
| Pilling Resistance: ✂*                  | ASTM-D-3511<br>Class 3                                  |
| Colorfastness to Crocking: ☘*           | AATCC-8<br>Dry: Class 4/Wet: Class 3                    |
| Colorfastness to Light: ☀*              | AATCC-16<br>Class 4 at 40 Hours                         |

Class in the colorfastness requirements is based on a numerical scale of 5 for negligible or no color transfer to 1 for very severe color change or color transfer.

## FLAMMABILITY

California Technical Bulletin 117, Section E (Equivalent to BIFMA) Passes  
 NFPA 260 (Equivalent to UFAC) Class 1 Passes  
 May comply with California Technical Bulletin 133 when combined with appropriate components.

## CLEANING INFORMATION

S: Solvent – Spot clean, using a mild water-free solvent or dry cleaning product. Clean only in a well-ventilated room and avoid any product containing carbon S: tetrachloride or other toxic materials. Pretest a small area before proceeding.

## FEATURES AND BENEFITS OF NANO-TEX®

- Spill/Stain Prevention**
  - Fabric aggressively repels liquids (liquid beads and rolls off)
  - Liquids can be blotted off the fabric face preventing staining and penetration
  - Helps prevent staining of fabric from dirt and spills, including hot coffee, mustard, salad dressing, blood, urine and iodine
  - Can be cleaned with detergents, solvents or bleach (fabric appropriate)
- Performance**
  - Maintains natural hand
  - Highly breathable
  - Permanent
- Environmentally Friendly**
  - Nano-Tex is an environmentally friendly chemistry that is recyclable
  - MBDC Certified

## DURABLOCK™ INFORMATION

This pattern is stocked with DuraBlock™ and can be ordered from inventory by the yard. Please use the DuraBlock™ number below each sample on the face of this card for Nano-Tex plus DuraBlock™.

Same "Features and Benefits" of Nano-Tex® plus the following:

- Durable, Breathable Barrier**
  - Prevents liquid or contaminate from reaching cushion
  - Breathability offers comfort for extended seating periods compared to vinyls and polyurethanes
  - Leaves fabric soft and moldable for upholstery applications
- Environmentally Friendly**
  - 100% antimony-free polyester is completely recyclable
  - Conforms to MBDC's design protocol

## ADDITIONAL INFORMATION

**Custom Capabilities:** All patterns can be custom colored. Minimum yardage applies.

**Memo Samples:** Please keep this card intact. Individual memo samples can be ordered on our web site or by contacting customer service.

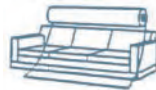
**Color Matching:** Mayer Fabrics always attempts to ship a satisfactory commercial match. Because of industry standard dye lot variation, colors may not match exactly.

**Specifications:** Specifications are correct at the time of printing. Current specifications are available on our web site.

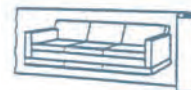
\*ACT® Registered Certification Marks



Railroaded: This feature allows reduction of seams and enables smoother furniture tailoring.



Fabric "up the roll" or "regular" position



Fabric "railroaded" or "top selvage" position

All railroaded patterns should be upholstered as shown on card.



GSA Contract # GS-28F-0022P