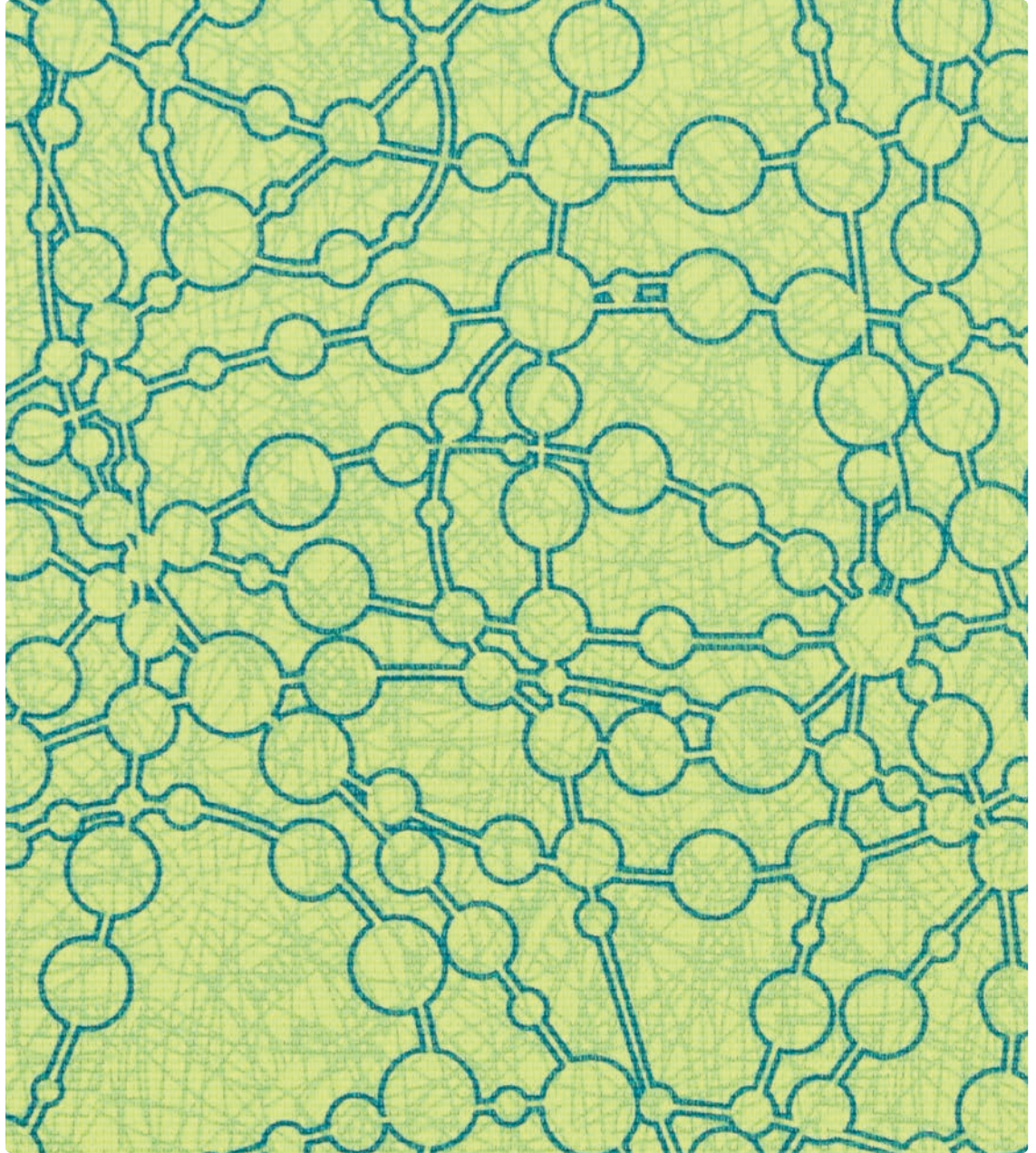


Vinyl



Application
Upholstery Seating

Content
75% Vinyl, 25% Polyester -
Phthalate Free

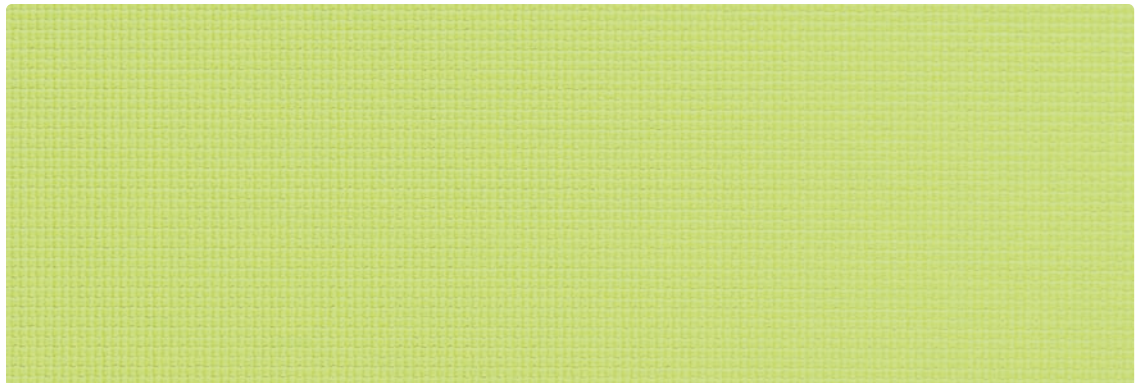
Width
54 inches

Abrasion (Wyzenbeek/Cotton Duck)
Exceeds 100,000 Double Rubs

Finish
Soil & Stain Resistant Topcoat -
Ink Resistant with
Anti-Bacterial/Microbial

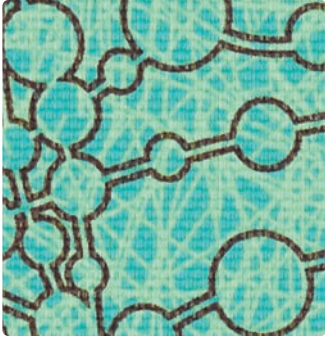
Reduced Environmental Impact
GREENGUARD Certified,
Phthalate Free,
ROSH Compliant,
REACH Compliant

ATOMIC
AM-003 Citrus

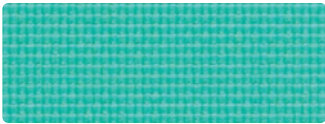


FINESSE
FI-003 Limeade

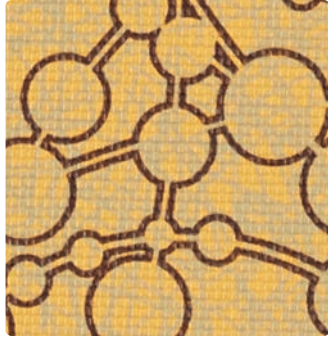
ATOMIC with FINESSE



ATOMIC
AM-014 Turquoise



FINESSE
FI-014 Capri



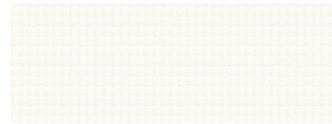
ATOMIC
AM-002 Goldenrod



FINESSE
FI-002 Lemon



ATOMIC
AM-027 Glacier



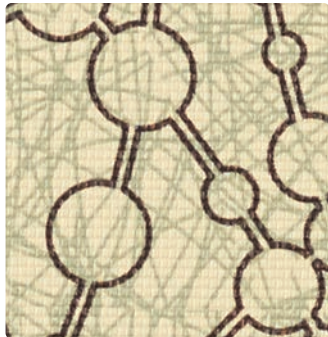
FINESSE
FI-027 Alabaster



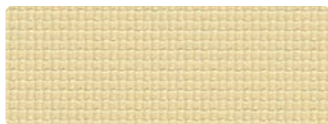
ATOMIC
AM-001 Flame



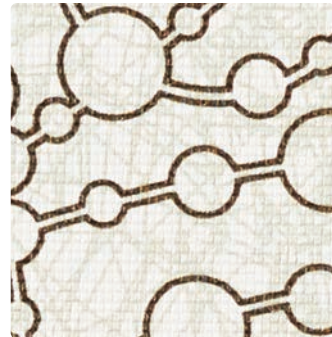
FINESSE
FI-001 Poppy



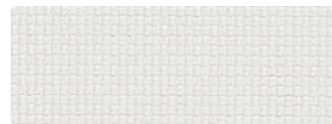
ATOMIC
AM-007 Almond



FINESSE
FI-007 Mojave



ATOMIC
AM-017 Oyster



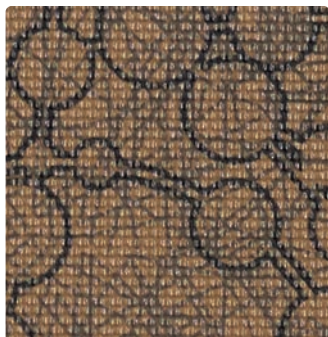
FINESSE
FI-017 Stucco



ATOMIC
AM-004 Midnight



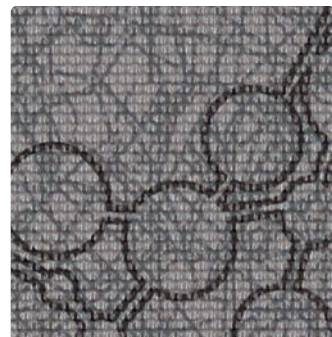
FINESSE
FI-004 Indigo



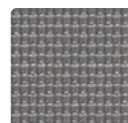
ATOMIC
AM-000 Walnut



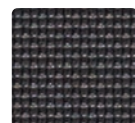
FINESSE
FI-000 Cocoa



ATOMIC
AM-006 Thunder



FINESSE
FI-016 Mercury



FINESSE
FI-006 Caviar

TECHNICAL INFORMATION

Content: 75% Vinyl, 25% Polyester - Phthalate Free

Width: 54"

Backing: 100% Polyester

Atomic Approx. Repeat: 8.875" H, 9.1875" V

Finesse Approx. Repeat: None

Weight: 30.75 oz./linear yard

Finish: Soil & Stain Resistant Topcoat - Ink Resistant with Anti-Bacterial/Microbial

Directional: Yes

Railroaded: No

PERFORMANCE

Surface Abrasion: Heavy Duty ASTM D4157
(Wyzenbeek/Cotton Duck)

Colorfastness to Crocking AATCC-8

Colorfastness to Light AATCC 16

Results

Exceeds 100,000 Double Rubs

Dry: Class 4 min / Wet: Class 4 min

Class 4 min at 200 hours

FLAMMABILITY

California Technical Bulletin 117-2013

NFPA 260/UFAC Class 1

May comply with California Technical Bulletin 133 when combined with appropriate components.

REDUCED ENVIRONMENTAL IMPACT

This product is **GREENGUARD Certified for low chemical and particle emissions to UL standard UL 2818 and may contribute to LEED certification. For complete information visit mayerfabrics.com and UL.com/gg.**

Phthalate Free

ROSH Compliant

REACH (Registration, Evaluation, Authorization and Restrictions of Chemicals) Compliant

CLEANING INFORMATION

W: Water-Based Cleaner

BC: Bleach Cleanable – 1 part bleach, 9 parts water = 10% bleach, 90% water solution. Do not clean/disinfect fabric for longer than 10 minutes using the 10% bleach solution. Always rinse promptly with clean water after applying the bleach solution. Failure to do so will void any and all warranties.

ADDITIONAL INFORMATION

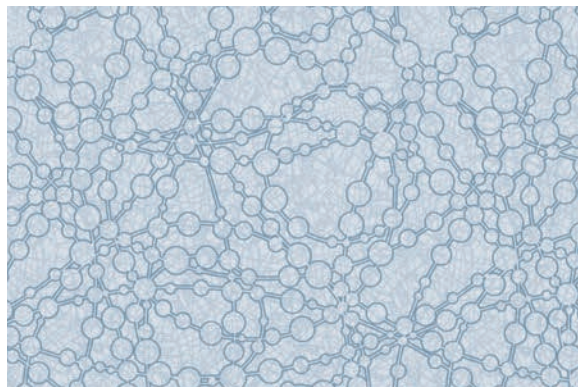
Custom Capabilities: All patterns can be custom colored. Minimum yardage applies.

Specifications: Specifications are correct at the time of printing. Current specifications are available on our website.

Digital Swatch Card Color Matching: Due to color variations on different monitors and color printers, actual swatch colors may vary slightly. Please request a memo sample from Mayer Fabrics to ensure proper color representation.



This fabric meets or exceeds these ACT performance guidelines.
Certification Marks owned by ACT



ATOMIC – Approx. Repeat: 8.875" H, 9.1875" V

