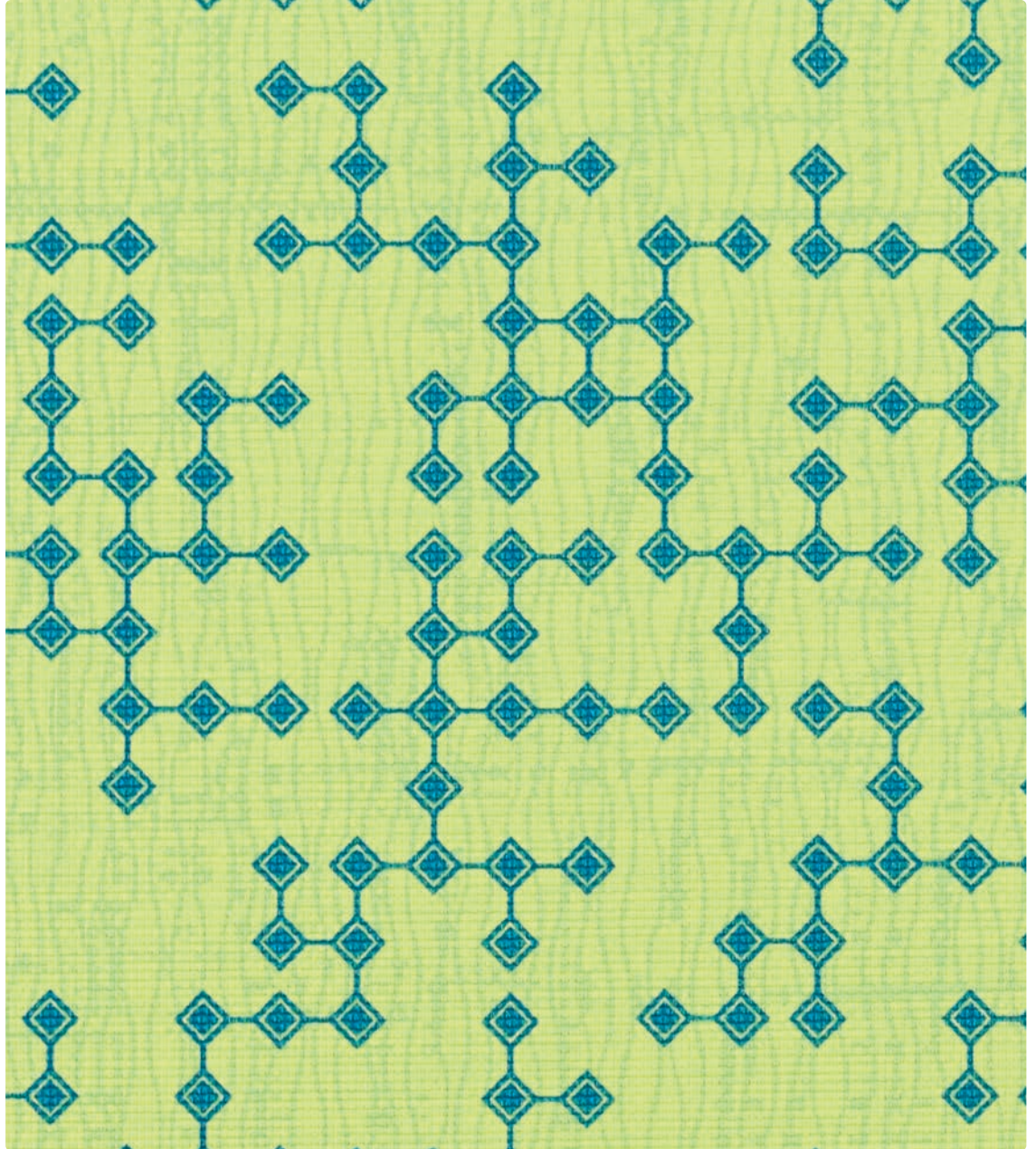


Vinyl



APEX
AP-003 Citrus



FINESSE
FI-003 Limeade

Application
Upholstery Seating

Content
75% Vinyl, 25% Polyester -
Phthalate Free

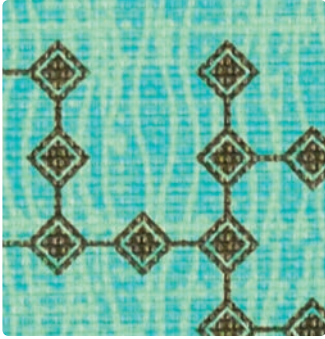
Width
54 inches

Abrasion (Wyzenbeek/Cotton Duck)
Exceeds 100,000 Double Rubs

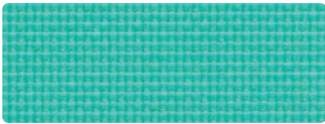
Finish
Soil & Stain Resistant Topcoat -
Ink Resistant with
Anti-Bacterial/Microbial

Reduced Environmental Impact
GREENGUARD Certified,
Phthalate Free,
ROSH Compliant,
REACH Compliant

APEX with FINESSE



APEX
AP-014 Turquoise



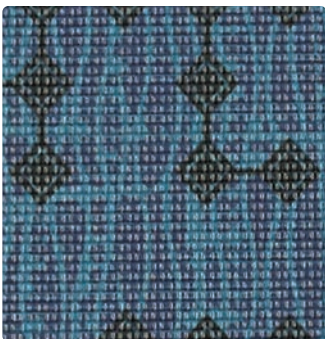
FINESSE
FI-014 Capri



APEX
AP-001 Flame



FINESSE
FI-001 Poppy



APEX
AP-004 Midnight



FINESSE
FI-004 Indigo



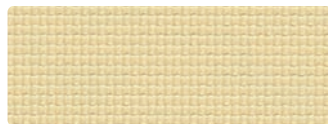
APEX
AP-002 Goldenrod



FINESSE
FI-002 Lemon



APEX
AP-007 Almond



FINESSE
FI-007 Mojave



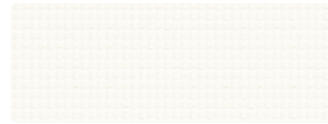
APEX
AP-000 Walnut



FINESSE
FI-000 Cocoa



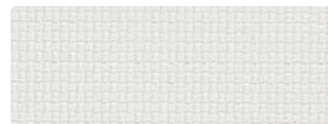
APEX
AP-027 Glacier



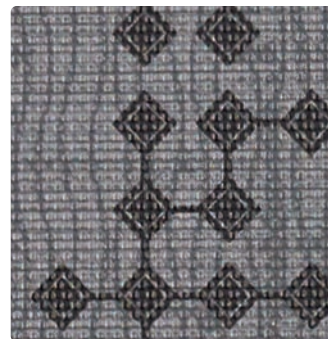
FINESSE
FI-027 Alabaster



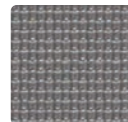
APEX
AP-017 Oyster



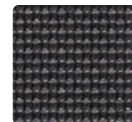
FINESSE
FI-017 Stucco



APEX
AP-006 Thunder



FINESSE
FI-016 Mercury



FINESSE
FI-006 Caviar

TECHNICAL INFORMATION

Content: 75% Vinyl, 25% Polyester - Phthalate Free

Width: 54"

Backing: 100% Polyester

Apex Approx. Repeat: 18" H, 9.125" V

Finesse Approx. Repeat: None

Weight: 30.75 oz./linear yard

Finish: Soil & Stain Resistant Topcoat - Ink Resistant with Anti-Bacterial/Microbial

Directional: Yes

Railroaded: No

PERFORMANCE

Surface Abrasion: Heavy Duty ASTM D4157
(Wyzenbeek/Cotton Duck)

Colorfastness to Crocking AATCC-8

Colorfastness to Light AATCC 16

Results

Exceeds 100,000 Double Rubs

Dry: Class 4 min / Wet: Class 4 min

Class 4 min at 200 hours

FLAMMABILITY

California Technical Bulletin 117-2013

NFPA 260/UFAC Class 1

May comply with California Technical Bulletin 133 when combined with appropriate components.

REDUCED ENVIRONMENTAL IMPACT

This product is GREENGUARD Certified for low chemical and particle emissions to UL standard UL 2818 and may contribute to LEED certification. For complete information visit mayerfabrics.com and UL.com/gg.

Phthalate Free

ROSH Compliant

REACH (Registration, Evaluation, Authorization and Restrictions of Chemicals) Compliant

CLEANING INFORMATION

W: Water-Based Cleaner

BC: Bleach Cleanable – 1 part bleach, 9 parts water = 10% bleach, 90% water solution. Do not clean/disinfect fabric for longer than 10 minutes using the 10% bleach solution. Always rinse promptly with clean water after applying the bleach solution. Failure to do so will void any and all warranties.

ADDITIONAL INFORMATION

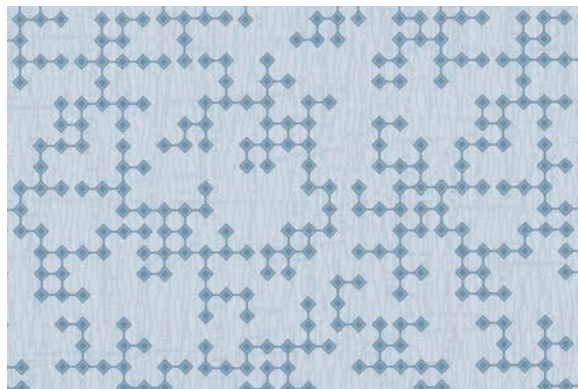
Custom Capabilities: All patterns can be custom colored. Minimum yardage applies.

Specifications: Specifications are correct at the time of printing. Current specifications are available on our website.

Digital Swatch Card Color Matching: Due to color variations on different monitors and color printers, actual swatch colors may vary slightly. Please request a memo sample from Mayer Fabrics to ensure proper color representation.



This fabric meets or exceeds these ACT performance guidelines.
Certification Marks owned by ACT



APEX – Approx. Repeat: 18" H, 9.125" V



FURNITURE CONCEPTS
Home of TOUGH STUFF!

www.furnitureconcepts.com

800.969.4100

inf0@furnitureconcepts.com

