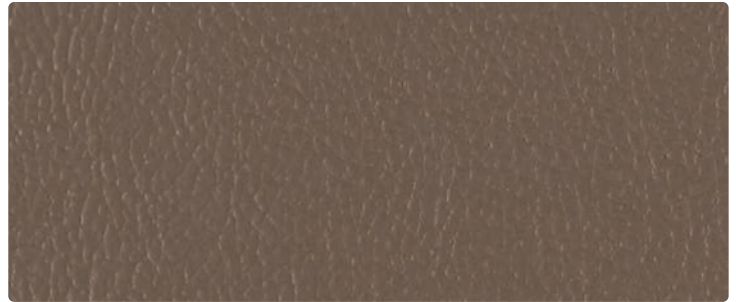




Lipstick  
RC-001



Greige  
RC-010



Brandy  
RC-008



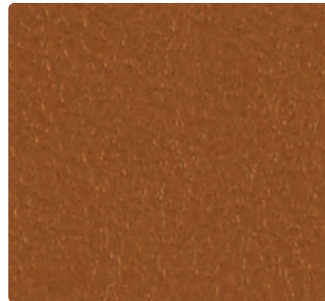
Ecru  
RC-007



Nickel  
RC-036



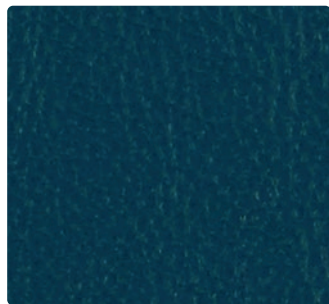
Basil  
RC-003



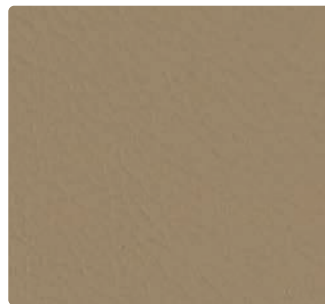
Sepia  
RC-009



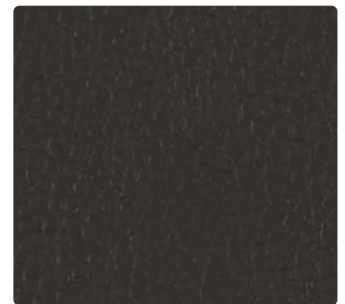
Slate  
RC-026



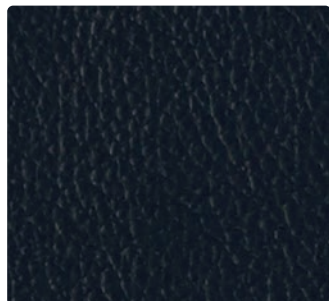
Sapphire  
RC-004



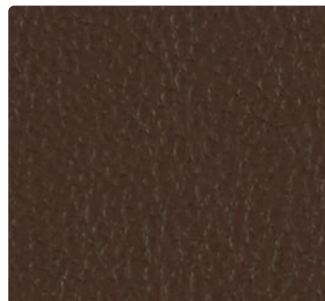
Driftwood  
RC-020



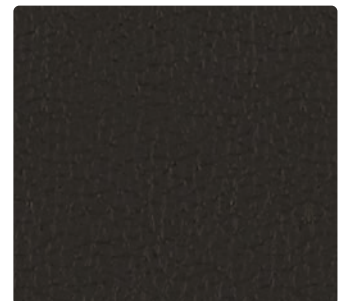
Thunder  
RC-016



Navy  
RC-014



Chocolate  
RC-000



Black  
RC-006



**Application**  
Upholstery Seating

**Content**  
85% Vinyl face  
15% Polyester backing

**Width**  
54 inches

**Abrasion** (Wyzenbeek/Cotton Duck)  
Exceeds 250,000 Double Rubs

**Finish**  
None

**Reduced Environmental Impact**  
GREENGUARD Certified



**TECHNICAL INFORMATION**

Content: 85% Vinyl face  
15% Polyester backing

Width: 54"

Approx. Repeat: None

Weight: 24.5 oz./linear yard

Finish: None

Directional: No

Railroaded: No

**PERFORMANCE**

Surface Abrasion: Heavy Duty ASTM D 4157  
(Wyzenbeek/Cotton Duck)

Colorfastness to Crocking AATCC 8

Colorfastness to Light AATCC 16

**Results**

Exceeds 250,000 Double Rubs Multiple factors affect fabric durability and appearance retention, including end-user application and proper maintenance. Wyzenbeek results above 100,000 double rubs have not been shown to be a reliable indicator of increased fabric lifespan.

Dry: Class 4 min / Wet: Class 4 min

Class 5 at 200 hours

**FLAMMABILITY**

California Technical Bulletin 117-2013

NFPA 260/UFAC Class 1

FMVSS 302

May comply with California Technical Bulletin 133 when combined with appropriate components.

**REDUCED ENVIRONMENTAL IMPACT**

This product is GREENGUARD Certified for low chemical and particle emissions to UL standard UL 2818 and may contribute to LEED certification. For complete information visit [mayerfabrics.com](http://mayerfabrics.com) and [UL.com/gg](http://UL.com/gg).

**CLEANING INFORMATION**

W: Water-Based Cleaner

**Disclaimer: Do not use bleach or solvent-based cleaners.**

**ADDITIONAL INFORMATION**

**Custom Capabilities:** All patterns can be custom colored. Minimum yardage applies.

**Digital Swatch Card Color Matching:** Due to color variations on different monitors and color printers, actual swatch colors may vary slightly. Please request a memo sample from Mayer Fabrics to ensure proper color representation.

**Specifications:** Specifications are correct at the time of printing. Current specifications are available on our website.



This fabric meets or exceeds these ACT performance guidelines.  
\*Certification Marks owned by ACT\*



**MAYER**FABRICS