

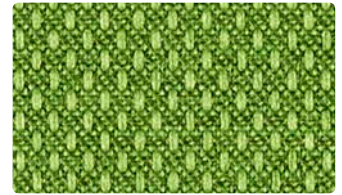
Palm
425-003



Creme
425-017



Biscuit
425-007



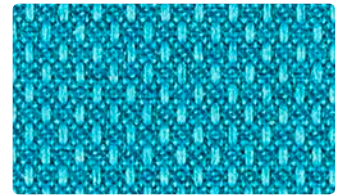
Jungle
425-013



Aluminum
425-026



Cocoa
425-010



Prussian
425-014

Application
Upholstery Seating

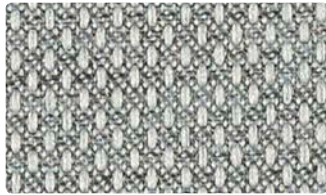
Content
75% Recycled Polyester,
25% Polyester

Width
54 inches

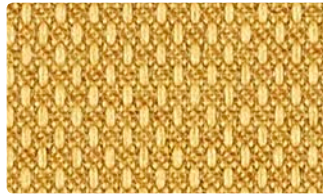
Abrasion (Wyzenbeek/Cotton Duck)
Passes 140,000 Double Rubs

Finish
Stain Repellent

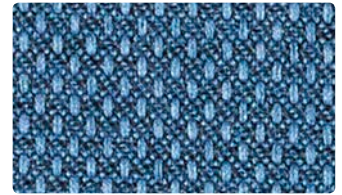
Reduced Environmental Impact
GREENGUARD Gold Certified



Flint
425-016



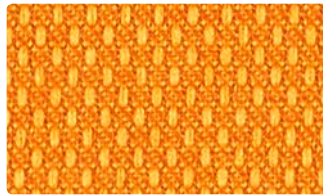
Mustard
425-002



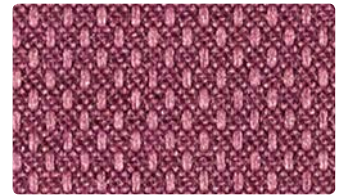
Ink
425-004



Carbon
425-006



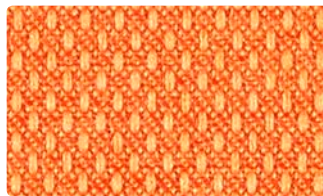
Orange Peel
425-019



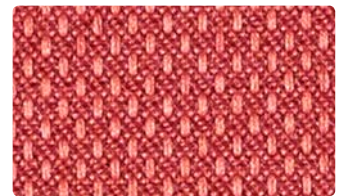
Aubergine
425-005



Chocolate
425-000



Persimmon
425-009



Barn Red
425-001

TECHNICAL INFORMATION

Content: **75% Post-Consumer Recycled Polyester**, 25% Polyester
 Width: 54"
 Backing: Latex
 Approx. Repeat: 0.17" H, 0.20" V

Weight: 14.5 oz./linear yard
 Finish: Stain Repellent
 Directional: Yes
 Railroaded: No

PERFORMANCE

Surface Abrasion: Heavy Duty ASTM D 4157
 (Wyzenbeek/Cotton Duck)
 Pilling Resistance ASTM D 3511
 Colorfastness to Crocking AATCC 8
 Colorfastness to Light AATCC 16E

Results

Passes 140,000 Double Rubs
 Multiple factors affect fabric durability and appearance retention, including end-user application and proper maintenance. Wyzenbeek results above 100,000 double rubs have not been shown to be a reliable indicator of increased fabric lifespan.
 Class 4
 Dry: Class 4 / Wet: Class 4
 Class 4 at 40 hours

FLAMMABILITY

California Technical Bulletin 117-2013
 NFPA 260/UFAC Class 1
 ASTM E84 (Unadhered) Class 1 or A
 May comply with California Technical Bulletin 133 when combined with appropriate components.

REDUCED ENVIRONMENTAL IMPACT

This product is GREENGUARD Gold Certified for low chemical and particle emissions to UL standard UL 2818 and may contribute to LEED certification. For complete information visit mayerfabrics.com and UL.com/gg.

CLEANING INFORMATION

WS: Water/Solvent Cleaner

ADDITIONAL INFORMATION

Custom Capabilities: All patterns can be custom colored. Minimum yardage applies.
Specifications: Specifications are correct at the time of printing. Current specifications are available on our website.
Digital Swatch Card Color Matching: Due to color variations on different monitors and color printers, actual swatch colors may vary slightly. Please request a memo sample from Mayer Fabrics to ensure proper color representation.



This fabric meets or exceeds these ACT performance guidelines.
 *Certification Marks owned by ACT®



Water and Stain Repellent Finish



This 100% polyester fabric is included in the Underwriter's Laboratory Fabric Recognition Program. Additional testing of this U.L. recognized component is not required on approved panels from participating manufacturers.



MAYERFABRICS

