



MG-002
Straw



MG-003
Aloe



MG-047
Oyster



MG-027
Hemp



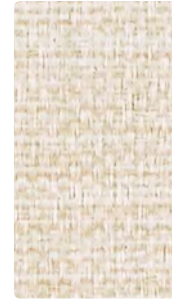
MG-009
Melon



MG-033
Algae



MG-037
Haze



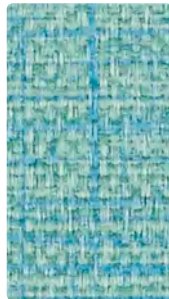
MG-007
Linen



MG-026
Cloud



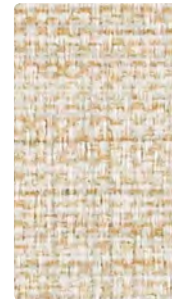
MG-019
Persimmon



MG-023
Turquoise



MG-020
Fog



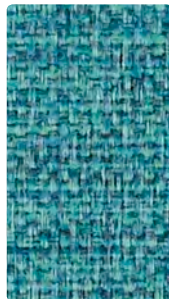
MG-017
Flax



MG-036
Rain



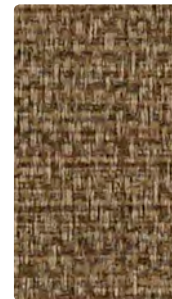
MG-001
Rouge



MG-013
Aqua



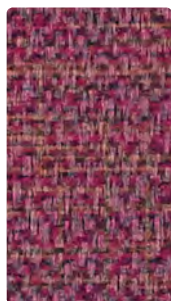
MG-030
Taupe



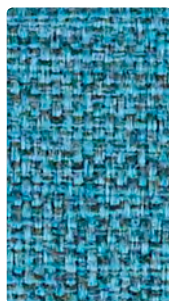
MG-010
Latte



MG-016
Sterling



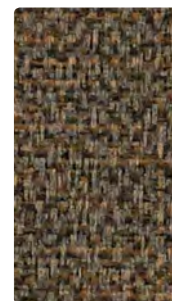
MG-008
Magenta



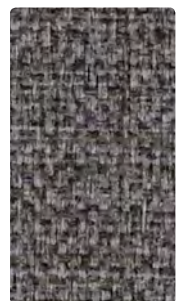
MG-014
Sky



MG-004
Indigo



MG-000
Sable



MG-006
Charcoal

Application
Upholstery Seating

Content
80% Vinyl **21P Free** face
20% Polyester backing

Width
54 inches

Abrasion (Wyzenbeek/Cotton Duck)
Exceeds 250,000 Double Rubs

Finish
Soil and Stain Resistant Top Coat
with Ink Resistant Technology

Reduced Environmental Impact
GREENGUARD Certified
No FR additives

TECHNICAL INFORMATIONContent: 80% Vinyl **21P Phthalate Free** face, 20% Polyester backing

Width: 54"

Approx. Repeat: None

Weight: 30 oz./linear yard

Finish: Soil and Stain Resistant Top Coat with Ink Resistant Technology

Directional: Yes

Railroaded: No

PERFORMANCESurface Abrasion: Heavy Duty ASTM D 4157
(Wyzenbeek/Cotton Duck)

Colorfastness to Crocking AATCC 8

Colorfastness to Light AATCC 16-2004, Opt 3

ResultsExceeds 250,000 Double Rubs Multiple factors affect fabric durability and appearance retention, including end-user application and proper maintenance. Wyzenbeek results above 100,000 double rubs have not been shown to be a reliable indicator of increased fabric lifespan.

Dry: Class 4 min / Wet: Class 4 min

Class 5 at 300 hours

FLAMMABILITY

California Technical Bulletin 117-2013

NFPA 260/UFAC Class 1

FMVSS 302

May comply with California Technical Bulletin 133 when combined with appropriate components.

REDUCED ENVIRONMENTAL IMPACT**This product is GREENGUARD Certified for low chemical and particle emissions to UL standard UL 2818 and may contribute to LEED certification. For complete information visit mayerfabrics.com and UL.com/gg.****No FR additives****21P Phthalate Free (includes all Phthalates listed in CAL Prop 65 & CPSIA)****Lead Free****BPA Free/TRIS Free/Formaldehyde Free****Does not contain Conflict Minerals****CLEANING INFORMATION**

WS: Water/Solvent Cleaner

BC: Bleach Cleanable – 1 part bleach, 9 parts water = 10% bleach, 90% water solution. **Do not clean/disinfect fabric for longer than 10 minutes using the 10% bleach solution. Always rinse promptly with clean water after applying the bleach solution. Failure to do so will void any and all warranties.****For additional care and cleaning information, please refer to the Mayer Fabrics website.****ADDITIONAL INFORMATION****Custom Capabilities:** All patterns can be custom colored. Minimum yardage applies.**Digital Swatch Card Color Matching:** Due to color variations on different monitors and color printers, actual swatch colors may vary slightly. Please request a memo sample from Mayer Fabrics to ensure proper color representation.**Specifications:** Specifications are correct at the time of printing. Current specifications are available on our website.This fabric meets or exceeds these ACT performance guidelines.
*Certification Marks owned by ACT®**MAYER**FABRICS